

Soft Coated Wheaten Terriers		2020 Mid-Year (through July 2020)													
Metric	2008	2009	2010	2011	2012	2013	2014	2015	2016	2017	2018	2019	2020	Notes	
	Registered Litters	747	736	709	682	650	666	744	714	740	782	754	705	396	# AKC litters registered each year
Litter Complement	4,105	4,037	3,961	3,781	3,785	3,893	4,459	4,247	4,372	4,649	4,358	4,185	2,283	# Pups in each year's litters (known as the "Complement")	
Average Complement	5.50	5.49	5.59	5.54	5.82	5.85	5.99	5.95	5.91	5.95	5.78	5.94	5.77	Average # of pups per litter	
Individually Registered Pups (to date)	1,336	1,264	1,330	1,313	1,318	1,351	1,542	1,478	1,576	1,682	1,539	1,357	549	# Pups from each year's litters individually registered (to date)	
Actual Return Rate (to date)	32.5%	31.3%	33.6%	34.7%	34.8%	34.7%	34.6%	34.8%	36.0%	36.2%	35.3%	32.4%	24.0%	% Pups from each year's litters individually registered (to date)	
Limited Registrations (to date)	409	382	410	473	515	523	609	507	572	666	672	591	243	# Limited Registrations from each year's litters (to date)	
% Complement Registered Limited (to date)	10.0%	9.5%	10.4%	12.5%	13.6%	13.4%	13.7%	11.9%	13.1%	14.3%	15.4%	14.1%	10.6%	% Pups from each year's litters Registered as Limited (to date)	
Revoked Limited (to date)	1	2	1	1	3	6	8	2	2	2	5	1	-	# Revoked Limited Dogs from each year's litters (to date)	
Litters from Revoked Limited (to date)	1	2	1	1	3	5	8	2	2	2	5	1	-	Litters involving each year's Revoked Limited (to date)	
Complement Bitches Bred	148	192	208	176	206	201	219	184	210	137	69	19	2	Bitches from each year's litters that have been bred (to date)	
Complement Dogs Bred	85	63	73	84	76	77	65	83	74	86	39	13	1	Males from each year's litters that have been bred (to date)	
Total Complement Bred (to date)	233	255	281	260	282	278	284	267	284	223	108	32	3	Total from each year's litters that have been bred (to date)	
% Complement Bred (to date)	5.7%	6.3%	7.1%	6.9%	7.5%	7.1%	6.4%	6.3%	6.5%	4.8%	2.5%	0.8%	0.1%	% of each year's litters that have been bred (to date)	
Complement Bitches in Conformation	111	109	121	104	99	107	106	104	84	92	80	63	4	# Bitches from each year's litters in Conformation (to date)	
Complement Dogs in Conformation	87	74	82	81	57	71	82	76	65	72	73	44	5	# Males from each year's litters in Conformation (to date)	
Total Complement in Conformation (to date)	198	183	203	185	156	178	188	180	149	164	153	107	9	Total from each year's litters in Conformation (to date)	
% Complement in Conformation (to date)	4.8%	4.5%	5.1%	4.9%	4.1%	4.6%	4.2%	4.2%	3.4%	3.5%	3.5%	2.6%	0.4%	% of each year's litters in Conformation (to date)	
Total Complement in Companion (to date)	26	14	16	20	15	14	17	10	10	7	3	-	-	Total from each year's litters in Companion (to date)	
% Complement in Companion (to date)	0.63%	0.35%	0.40%	0.53%	0.40%	0.36%	0.38%	0.24%	0.23%	0.15%	0.07%	0.00%	0.00%	% of each year's litters in Companion (to date)	
Total Complement Placing in Performance (to date)	8	2	8	10	7	10	7	5	12	12	7	2	-	Total from each year's litters placing in Performance (to date)	
% Complement Placing in Performance (to date)	0.2%	0.0%	0.2%	0.3%	0.2%	0.3%	0.2%	0.1%	0.3%	0.3%	0.2%	0.0%	0.0%	% of each year's litters placing in Performance (to date)	

AKC Dog Registrations	1,461	1,342	1,387	1,584	1,499	1,524	1,679	1,757	1,720	1,850	1,772	1,661	1,018	# Registered from AKC Litters during each year
FSS Registrations	-	-	-	-	-	-	-	-	-	-	-	-	-	# of FSS Dog Registrations each year
Conditional Registrations	-	1	-	-	-	-	3	1	1	10	3	3	2	# of Conditional Registrations each year
Open Registrations	2	-	-	-	-	-	-	-	-	-	-	-	-	# of Open Registrations each year
Foreign Registrations	18	24	25	26	24	23	12	7	15	18	15	13	8	# of Foreign-born Registrations each year
Total Dogs Registered	1,481	1,367	1,412	1,610	1,523	1,547	1,694	1,765	1,736	1,878	1,790	1,677	1,028	Total Dog Registrations each year
Unique Bitches Bred (each year)	622	664	646	637	594	624	672	668	698	735	682	616	409	Unique # bitches bred each year
Unique Dogs Bred (each year)	349	377	350	360	324	309	346	315	345	353	347	319	251	Unique # males bred each year
Total Bred (each year)	971	1,041	996	997	918	933	1,018	983	1,043	1,088	1,029	935	660	Unique # bred each year
Unique Bitches in Conformation (each year)	330	331	312	323	296	281	266	270	265	257	229	228	121	Unique # of bitches in Conformation each year
Unique Dogs in Conformation (each year)	238	200	191	196	193	183	192	184	190	177	176	183	106	Unique # of males in Conformation each year
Total Unique in Conformation (each year)	568	531	503	519	489	464	458	454	455	434	405	411	227	Unique # in Conformation each year
% Change Conformation		-6.5%	-5.3%	3.2%	-5.8%	-5.1%	-1.3%	-0.9%	0.2%	-4.6%	-6.7%	1.5%	-44.8%	YOY % Change Conformation total dogs
Unique Bitches in Companion (each year)	59	50	48	49	52	52	46	42	44	35	33	26	19	Unique # of bitches in Companion each year
Unique Dogs in Companion (each year)	44	40	43	35	35	41	41	35	36	29	28	23	21	Unique # of males in Companion each year
Total Unique in Companion (each year)	103	90	91	84	87	93	87	77	80	64	61	49	40	Unique # in Companion each year
% Change Companion		-12.6%	1.1%	-7.7%	3.6%	6.9%	-6.5%	-11.5%	3.9%	-20.0%	-4.7%	-19.7%	-18.4%	YOY % Change Companion total dogs
Unique Bitches Placing in Performance (each year)	-	-	-	8	1	10	1	2	3	9	14	24	9	Unique # of bitches placing in Performance each year
Unique Dogs Placing in Performance (each year)	-	-	-	4	2	3	2	2	5	6	21	27	5	Unique # of males placing in Performance each year
Total Unique Placing in Performance (each year)	-	-	-	12	3	13	3	4	8	15	35	51	14	Unique # placing in Performance each year
% Change Performance		#DIV/0!	#DIV/0!	#DIV/0!	-75.0%	333.3%	-76.9%	33.3%	100.0%	87.5%	133.3%	45.7%	-72.5%	YOY % Change Performance total dogs placing

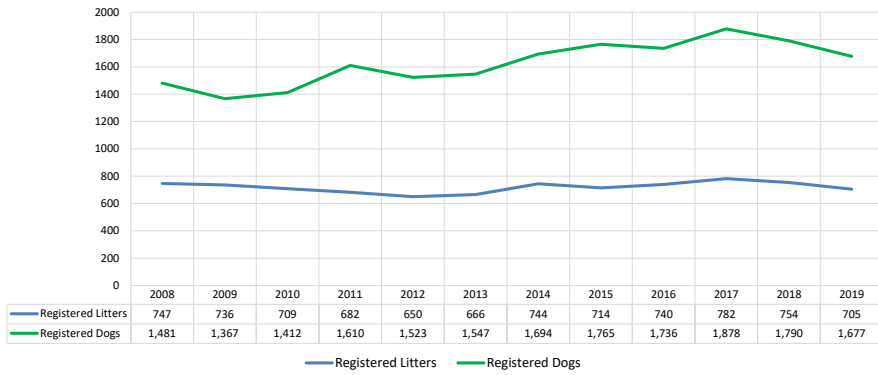
% Change YOY	2008	2009	2010	2011	2012	2013	2014	2015	2016	2017	2018	2019
Registered Litters	N/A	-1.5%	-3.7%	-3.8%	-4.7%	2.5%	11.7%	-4.0%	3.6%	5.7%	-3.6%	-6.5%
Litter Complement	N/A	-1.7%	-1.9%	-4.5%	0.1%	2.9%	14.5%	-4.8%	2.9%	6.3%	-6.3%	-4.0%
Registered Dogs	N/A	-7.7%	3.3%	14.0%	-5.4%	1.6%	0.0%	4.2%	-1.6%	8.2%	-4.7%	-6.3%

These %'s are calculated to show the change each year from the previous year.

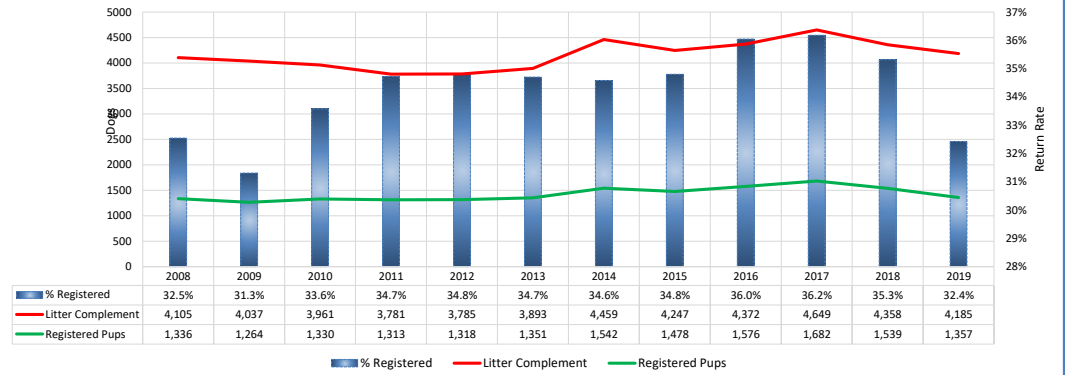
% Change Relative 2008	2008	2009	2010	2011	2012	2013	2014	2015	2016	2017	2018	2019
Registered Litters	0.0%	-1.5%	-5.1%	-8.7%	-13.0%	-10.8%	-0.4%	-4.4%	-0.9%	4.7%	0.9%	-5.6%
Litter Complement	0.0%	-1.7%	-3.5%	-7.9%	-7.8%	-5.2%	8.6%	3.5%	6.5%	13.3%	6.2%	1.9%
Registered Dogs	0.0%	-7.7%	-4.7%	8.7%	2.8%	4.5%	14.4%	19.2%	17.2%	26.8%	20.9%	13.2%

These %'s are calculated to show the change each year compared to 2008.

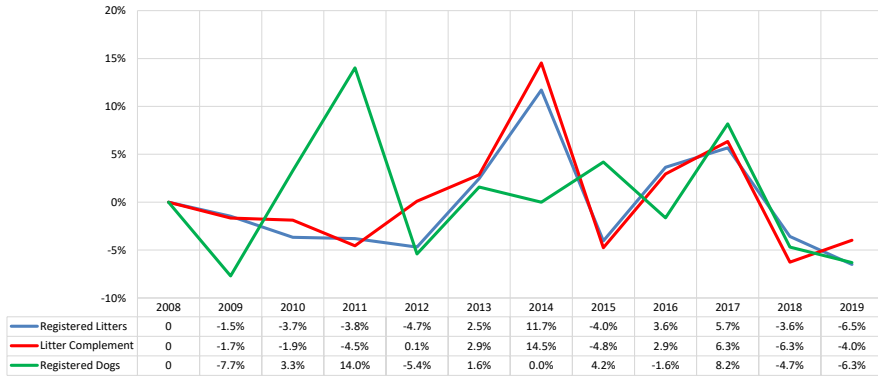
AKC Dog & Litter Registrations



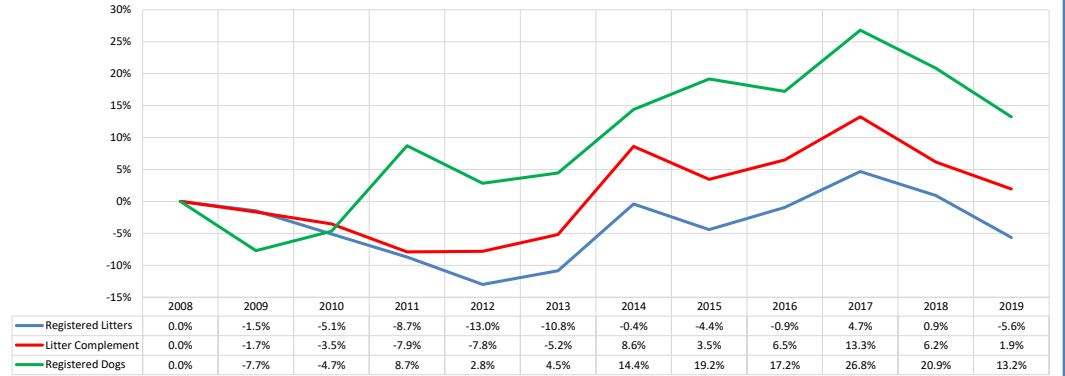
% of Each Year's Litter Complement that were Eventually Registered



% Change from Previous Year (YOY)



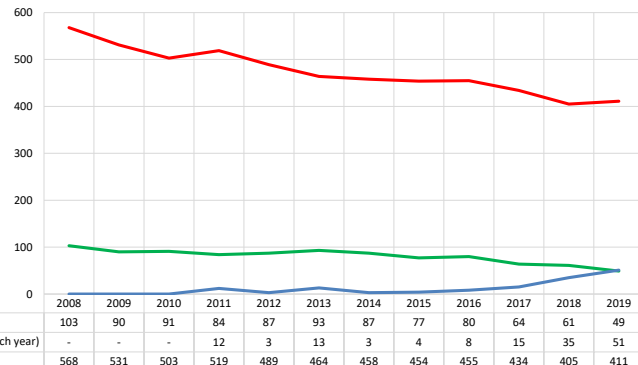
% Change Relative to 2008



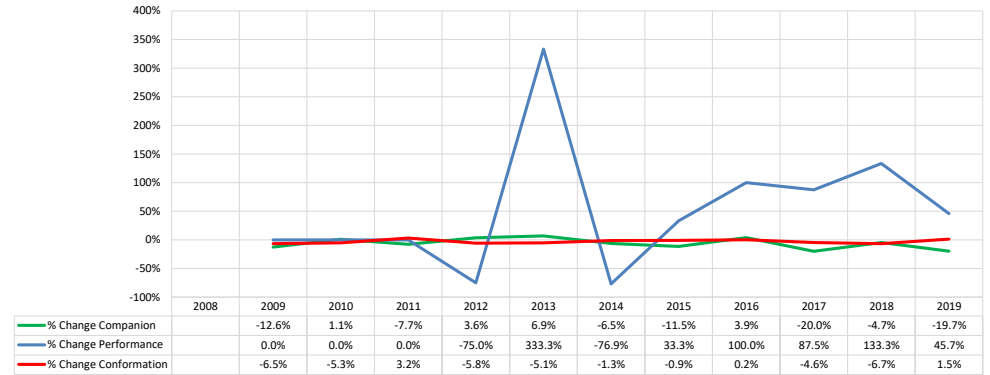
# Soft Coated Wheaten Terriers

# 2020 Mid-Year (through July 2020)

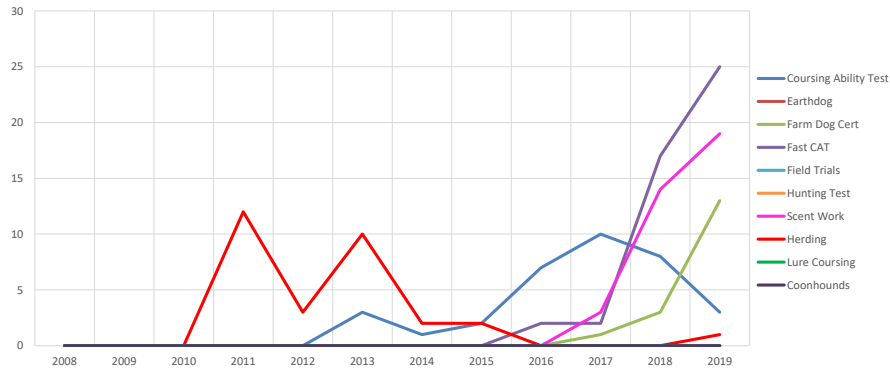
Competing: Total Unique Dogs by Sport Each Year



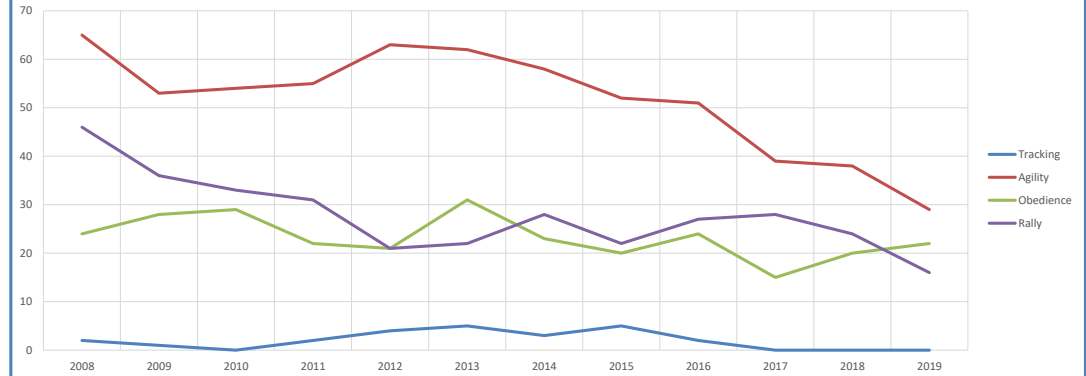
Competing: % Change Unique Total Dogs Year over Year by Sport



Performance: Total Unique Dogs Placing



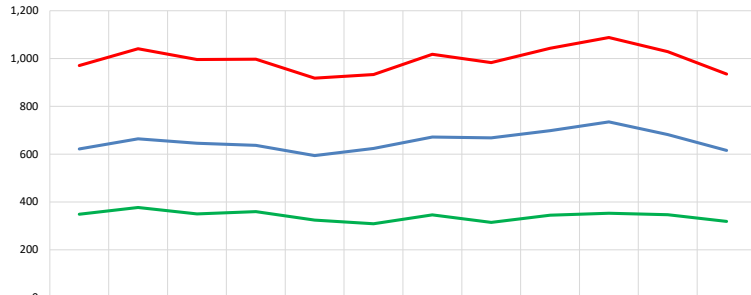
Companion: Total Unique Dogs Entered



**Soft Coated Wheaten Terriers**

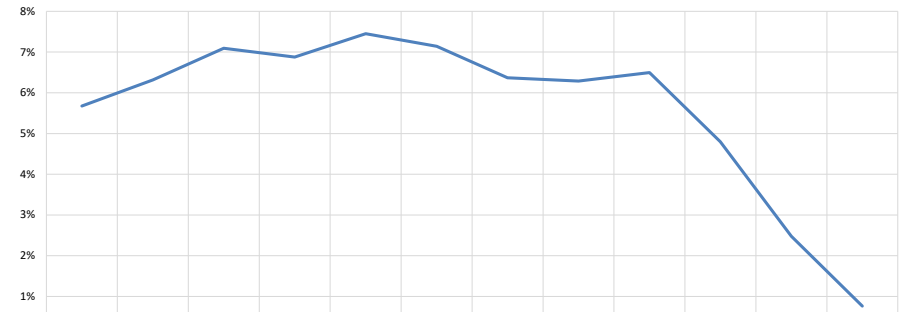
**2020 Mid-Year (through July 2020)**

**Breeding: Unique Individual Dogs & Bitches Bred Each Year**



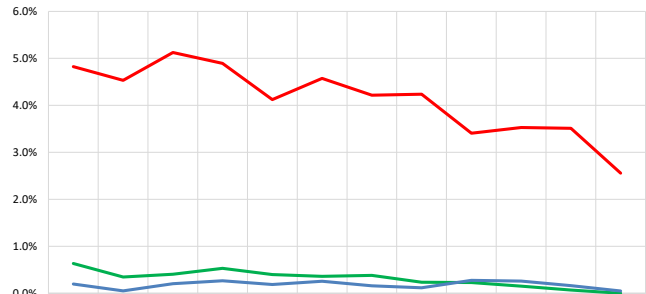
Year	Unique Dogs (each year)	Unique Bitches (each year)	Total Bred (each year)
2008	349	622	971
2009	377	664	1,041
2010	350	646	996
2011	360	637	997
2012	324	594	918
2013	309	624	933
2014	346	672	1,018
2015	315	668	983
2016	345	698	1,043
2017	353	735	1,088
2018	347	682	1,029
2019	319	616	935

**% of Each Year's Litter Complement that have been Bred (to date)**



Year	% Complement Bred (to date)
2008	5.7%
2009	6.3%
2010	7.1%
2011	6.9%
2012	7.5%
2013	7.1%
2014	6.4%
2015	6.3%
2016	6.5%
2017	4.8%
2018	2.5%
2019	0.8%

**Competing: % of Each Year's Litter Complement in Competition**



Year	% Complement in Companion (to date)	% Complement Placing in Performance (to date)	% Complement in Conformation (to date)
2008	0.63%	0.2%	4.8%
2009	0.35%	0.0%	4.5%
2010	0.40%	0.2%	5.1%
2011	0.53%	0.3%	4.9%
2012	0.40%	0.2%	4.1%
2013	0.36%	0.3%	4.6%
2014	0.38%	0.2%	4.2%
2015	0.24%	0.1%	4.2%
2016	0.23%	0.3%	3.4%
2017	0.15%	0.3%	3.5%
2018	0.07%	0.2%	3.5%
2019	0.00%	0.0%	2.6%